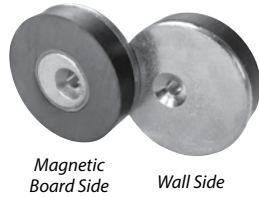


Installation Hardware:

Upper Mounting Disks



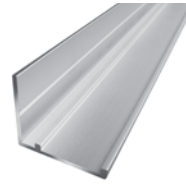
Lower Magnetic Disks



2-1/2" Stainless Steel Screws



Optional Aluminum Marker Tray



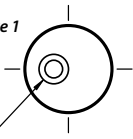
Suggested Tools:

- Electric Drill
- Drill Bits
- Tape Measure
- Level
- Pencil
- Phillips Screwdriver

Left Upper Mounting Disk

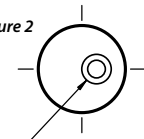
Right Upper Mounting Disk

Figure 1



Position offset hole as shown and firmly tighten screw

Figure 2



Position offset hole as shown and tighten after completion of "step 2-C".

SIDE VIEW - Figure 3

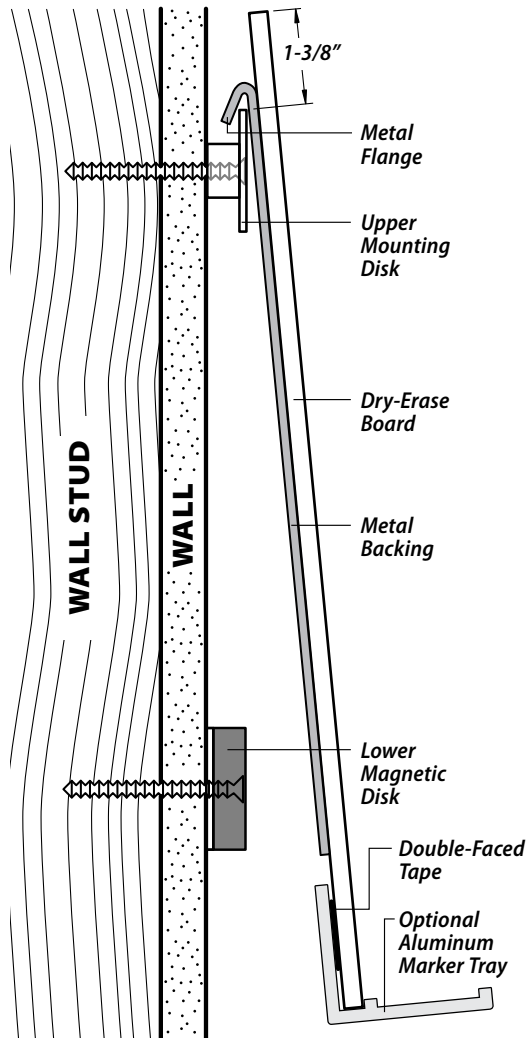


Figure 3

IMPORTANT:

You will need to determine what type of screws or wall anchors to use:

For wood wall studs, use the included 2-1/2" Stainless Steel Screws.

For metal wall studs, drill 5/64" starter hole, and use the included 2-1/2" Stainless Steel Screws.

For hard-surface substrates, use the appropriate wall-anchors. (Not included.)

Where ever possible, attaching your *Glass Marker Board* directly to studs is the most secure. If you are not sure which to use, consult a professional. Read all steps of these instructions to make sure you understand them before beginning.

CAUTION:

Be sure to wear proper protective eyewear. Use extreme caution before installation, *Glass Marker Board* corners are extremely fragile. Due to the potential danger if not installed properly, we recommend you have your *Glass Marker Board* installed by a qualified professional, to meet or exceed the construction codes for your location. Be sure to use all supplied *Upper Mounting Disks* and *Lower Magnetic Disks* for maximum holding strength.

1) Install Optional Aluminum Marker Tray

(If you didn't order this option, OR if it has been factory-installed, proceed to Step 2)

Peel off protective strip from the attached *Double-Faced Tape*. Before making contact with the back of the *Glass Marker Board*, carefully center and position the *Aluminum Marker Tray*.

CAUTION: The 'extra-strength' *Double-Faced Tape* is **not** repositionable.)

Affix *Aluminum Marker Tray* to the back of the *Glass Marker Board* as shown in **Figure 3**.

2) Install Upper Mounting Disks

We strongly advise installing mounting disks to wall studs when available. **NOTE:** It is not necessary to center *Glass Marker Board* over wall studs. If wall studs are not available, use heavy duty wall anchors.

- A) Firmly screw left *Upper Mounting Disk* to wall 1-3/8" down from top edge and at least 3" in from side of *Glass Marker Board* as described in **Figures 1 & 3**.
- B) Loosely attach (temporarily) right *Upper Mounting Disk*, with screw, to wall 1-3/8" down from top edge and at least 3" in from side of *Glass Marker Board* as described in **Figures 2 & 3**.
- C) Set your level on top of the two *Upper Mounting Disks*. Twist right *Upper Mounting Disk* until level, then tighten screw. (If your *Glass Marker Board* shipped with more than 2 *Upper Mounting Disks*, space them equally and attach, as shown in **Figure 2**.)

3) Install Lower Magnetic Disks

- A) All *Lower Magnetic Disks* should be positioned directly below *Upper Mounting Disks*, and approximately 3" up from bottom of *Glass Marker Board*. Firmly screw all *Lower Magnetic disks* to wall. (Attach to wall studs where available, or use wall anchors.)

4) Hang your Dry-Erase Board on wall

NOTE: We recommend applying a drop of silicone adhesive to each *Disk* to help avoid board movement.

- A) Hook *Top Metal Flange* on back of *Glass Marker Board* over *Upper Mounting Disks* as shown in **Figure 3**.
- B) Carefully swing bottom of *Glass Marker Board* toward *Lower Magnetic Disks*. Bottom of *Dry Erase Board* will "click" into place.